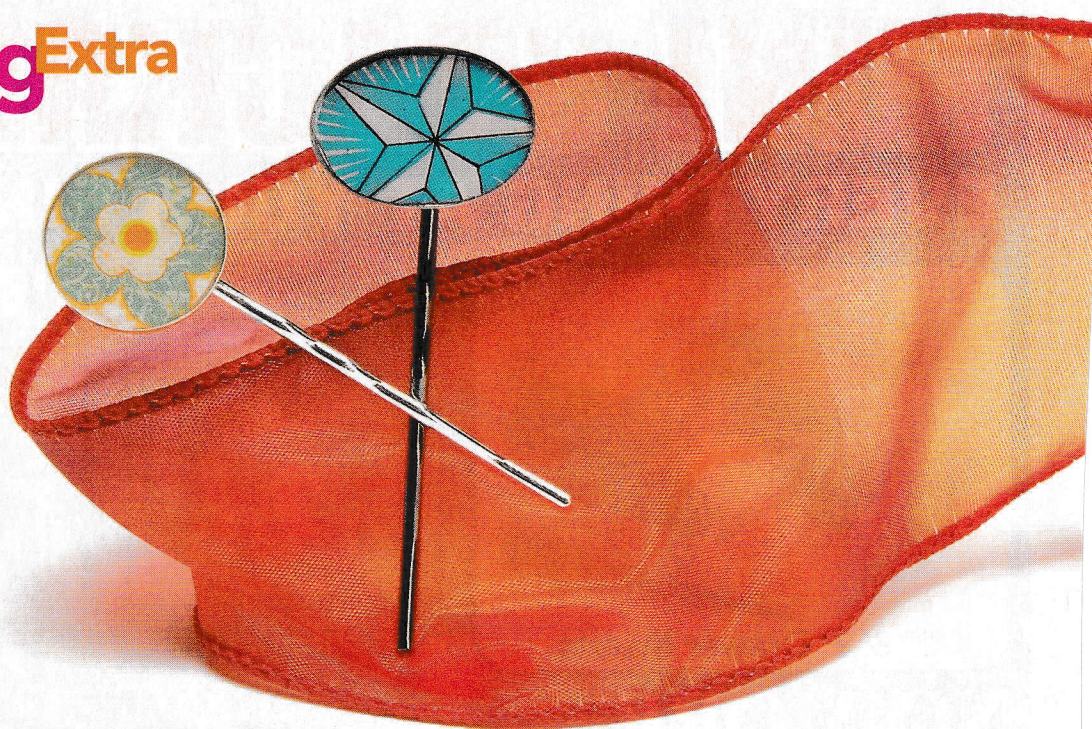


Resin bobby pins

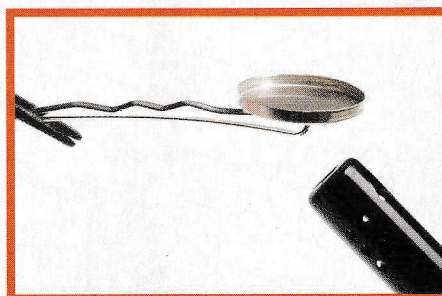
Hungry to learn a new jewelry-making skill? This project is a great way to think outside the stringing box. A soldering paste with a low melting point allows you to solder a bobby pin to a bezel cup using a match or lighter. Simply find an image you like — I used scrapbooking paper, paper from artchixstudio.com, and Mexican lottery cards — and apply sealer before covering the picture with resin. — *Steven James*



1 Place a bezel cup over an image and trace around the cup. Cut out the image.



2 Following the manufacturer's instructions for the sealer, apply two coats to each side of the image. Let it dry completely.



3 Apply soldering paste to the pad of a bobby pin and gently press the bobby pin to the center of the bezel cup. Using a match or lighter, follow the manufacturer's instructions for the solder paste. The heat transfers quickly through the bobby pin, so use cross-locking tweezers or some other heat-resistant tool to hold the bobby pin while you apply the heat. Once the bobby pin is cool, clean it according to the manufacturer's instructions.



4 Arrange the bobby pin so the bezel cup is level. Clay or nonstick molding compound works well. Follow the manufacturer's instructions for preparing a resin or lacquer product. Apply a thin layer of resin to the bottom of the bezel cup, place the image in the cup, and fill the cup with resin. Let it dry completely. ♣

Contact Steven via his Web site, macaroniandglitter.com.